

União DIN

Matéria Prima

ASTM A182 TP 304 e
TP 316/L

Acabamento de Superfície

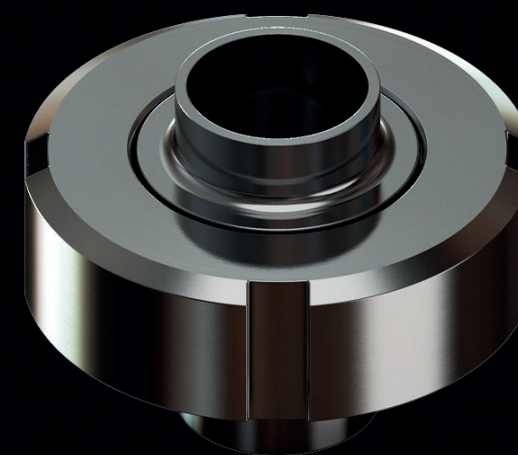
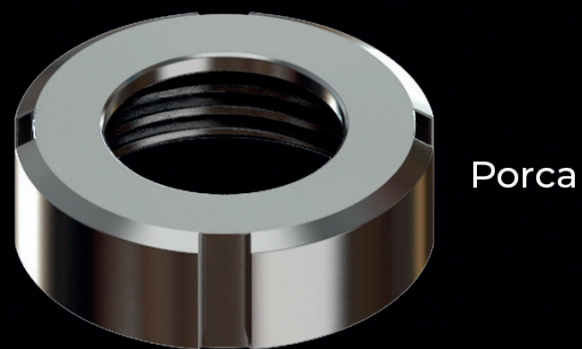
PI/PE: Ra < 0,80 µm (32 µin)
Polimento Mecânico

Vedações

EPDM
Silicone
Viton

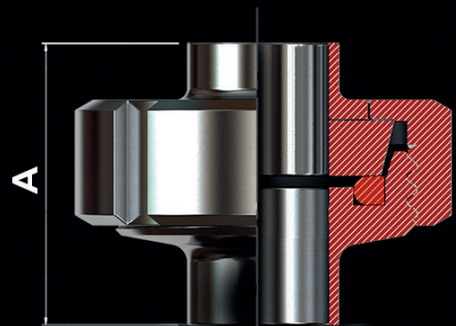
Normas e Bitolas

Dimensões conforme norma
DIN 11851



União DIN

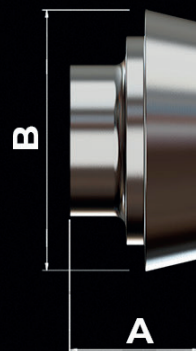
União



Porca



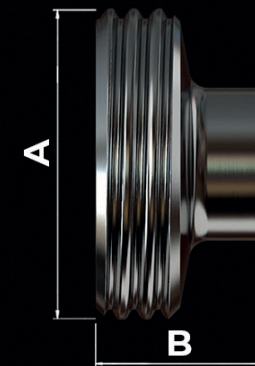
Niple



Vedação



Macho



Ø	A	A	B	A	B	A	B	A	B
1"	46,0	21,0	57,0	22,0	44,0	41,0	5,0	52,0	29,0
1.1/2"	52,0	21,0	71,0	26,0	56,0	52,0	5,0	65,0	33,0
2"	56,0	22,0	84,0	28,0	68,0	64,0	5,0	78,0	35,0
2.1/2"	64,0	25,0	103,0	32,0	86,0	81,0	5,0	95,0	40,0
3"	74,0	30,0	117,0	37,0	100,0	95,0	5,0	110,0	45,0
4"	88,0	31,0	138,0	44,0	121,0	115,0	5,0	130,0	54,0